

# SP-5B90 eXtreme Box Module

**SP5000X SERIES**



**Features:**

- Enhanced maintenance process.
- Modular design
- Class 1 Div 2, Groups A, B, C, and D
- Combine with any SP-5000x Series Display
- Conformal Coated
- UL 50E TYPE 4X Outdoor use

**Performance Specifications**

Model	SP-5B90 eXtreme Box		
Part Number	PFXSP5B90		
Application Memory	On board Flash (1 GB)		
Backup Memory	NVRAM 512 KB <sup>*1</sup>		
Interfaces	Serial	COM1	RS-232C / 422 / 485, Data Length: 7 or 8 bits, Stop Bit: 1 or 2 bits, Parity: None, Even or Odd, Data Transmission Speed: 2,400 (1,200) to 115,200 bps, Connector: D-Sub 9 pin (plug)
		COM2	RS-232C / 422 / 485, Data Length: 7 or 8 bits, Stop Bit: 1 or 2 bits, Parity: None, Even or Odd, Data Transmission Speed: 2,400 (1,200) to 115,200 bps, Connector: D-Sub 9 pin (plug)
	Ethernet	Standard: IEEE802.3i/IEEE802.3u/IEEE802.3ab, 10BASE-T/100BASE-TX Connector: Modular jack (RJ-45) x 2	
	USB	Type A (V2.0) x2, Mini B (V2.0) x1	
	SD Card	SD Card slot (System) x 1 SD Card slot (Storage) x 1	
	Ethernet	IEEE802.3i/IEEE802.3u/IEEE802.3ab, 10BASE-T/ 100BASE-TX/ 1000BASE-T <sup>*2</sup>	
	Expansion unit	Fieldbus Unit x 1	
	Sound output	Speaker Output: 300mW (Rated Load: 8Ω, Frequency: 1kHz) (Software Switch), LINE Output: Rated load: 10kΩ or more (Software Switch), Connector: 2-piece terminal block (AUX) x 1	
AUX Output Interface	Alarm output/Buzzer output, Rated voltage 24Vdc, Rated current, 50 mA, Connector 2-piece terminal block (AUX) x1		

<sup>\*1</sup> Amount of memory you can use depends on your screen editing software. For information refer to the manual of your screen editing software.  
<sup>\*2</sup> For 1000BASE-T communication, use twisted pair Ethernet cables with a rating of category 5e or higher.

**General Specifications**

Model	SP-5B90 Box
Part Numbers	PFXSP5B90
Rated Input Voltage	12 Vdc (Supply from Display Module)
Power Consumption	20 W Max (primary power supply including power loss)
Cooling Method	Natural air circulation
Weight	0.9kg[1.98lb] or less
External Dimensions	W188 x H131 x D45mm [W7.4 x H5.16 x D1.77 in.]
Warranty	Two (2) years

**Note:** Box Module environmental specifications follow those of the connected Display Module.

**Model Number Configuration**

**Display Module**

PFXSP5 \* \* \* \* \*

(1) (2) (3) (4) (5)

(1) Size	(2) Wireless LAN	(3) Resolution	(4) Touch Panel	(5) Power Supply
7 15"	90 eXtreme	W Wide TFT	A Analog	D DC
6 12"				
4 7"				

×

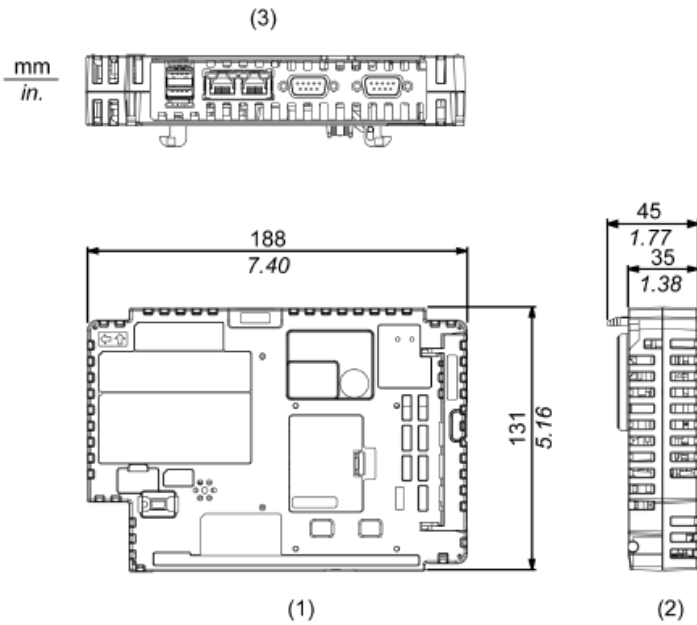
**Box Module**

PFXSP5 B \* \*

(6) (7)

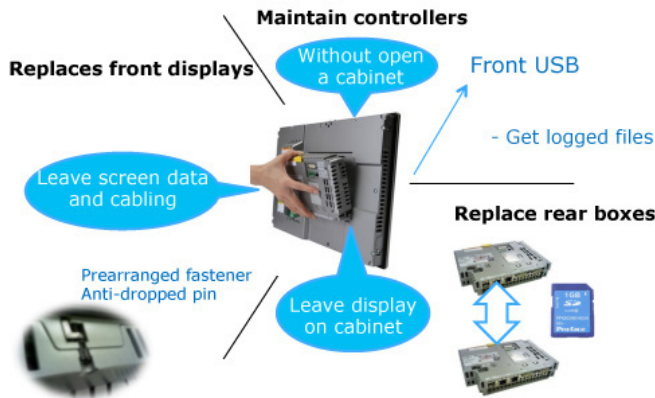
(6) Module Type	(7) Class
B Box	90 eXtreme

### External Dimensions



- 1 Front
- 2 Left
- 3 Bottom

### Easy Maintenance and Modularity



### Ordering Information

Model Number	Description
PFXSP5B90	SP5000X Series eXtreme Box Outdoor use, Rugged, Coated, Ethernet I/F x 2, COM I/F x 2, USB A I/F x 2, USB mini-B I/F, SD Card I/F x 2, AUX I/F, Expansion Unit I/F

### Options

Part Number	Description
PFXZCDS1GC61	SD Memory Card (1 GB, SLC, Class 6)
PFXZCHBMFBS1	SP5000X Series, Bracket for fixing Box module to Display module(SP-5490WA) (1 piece)
PFXZCHBMFBL1	SP5000X Series, Bracket for fixing Box module to Display module (1 piece)
PFXZCHFUB1	SP5000 Series/SP5000X Series, Bracket for fixing Fieldbus unit to Box module (1 piece)
PFXZCBCLUSA1	Clamp to prevent disconnection of USB cable (USB Type A, 1 port, 5 clamps/set)
PFXZCDS1GC61	SD memory card (1 GB, SLC) for System Card

## EXTREME Solutions



Oil & Gas



Water/Waste Water



Pumping Station



Transportation

**Pro-face America**  
 Phone: 734.477.0600  
 Fax: 734.864.7347  
[www.profaceamerica.com](http://www.profaceamerica.com)

**Customer Service Hotline: 800.289.9266**

For more information

**ACCESS**

[www.profaceamerica.com](http://www.profaceamerica.com)

**Pro-face**



## California Proposition 65 Warning—Lead and Lead Compounds

## Advertencia de la Proposición 65 de California—Plomo y compuestos de plomo

## Avertissement concernant la Proposition 65 de Californie—Plomb et composés de plomb

**⚠️ WARNING:** This product can expose you to chemicals including lead and lead compounds, which are known to the State of California to cause cancer and birth defects or other reproductive harm. For more information go to: [www.P65Warnings.ca.gov](http://www.P65Warnings.ca.gov).

**⚠️ ADVERTENCIA:** Este producto puede exponerle a químicos incluyendo plomo y compuestos de plomo, que es (son) conocido(s) por el Estado de California como causante(s) de cáncer y defectos de nacimiento u otros daños reproductivos. Para mayor información, visite : [www.P65Warnings.ca.gov](http://www.P65Warnings.ca.gov).

**⚠️ AVERTISSEMENT:** Ce produit peut vous exposer à des agents chimiques, y compris plomb et composés de plomb, identifiés par l'État de Californie comme pouvant causer le cancer et des malformations congénitales ou autres troubles de l'appareil reproducteur. Pour de plus amples informations, prière de consulter: [www.P65Warnings.ca.gov](http://www.P65Warnings.ca.gov).

All trademarks are the property of Schneider Electric SE, its subsidiaries, and affiliated companies.

**Schneider Electric USA, Inc.**  
800 Federal Street  
Andover, MA 01810 USA  
888-778-2733  
[www.schneider-electric.us](http://www.schneider-electric.us)

Todas las marcas comerciales son propiedad de Schneider Electric SE, sus filiales y compañías afiliadas.

Importado en México por:  
**Schneider Electric México, S.A. de C.V.**  
Av. Ejercito Nacional No. 904  
Col. Palmas, Polanco 11560 México, D.F.  
55-5804-5000  
[www.schneider-electric.com.mx](http://www.schneider-electric.com.mx)

Toutes les marques commerciales sont la propriété de Schneider Electric SE, ses filiales et compagnies affiliées.

**Schneider Electric Canada, Inc.**  
5985 McLaughlin Road  
Mississauga, ON L5R 1B8 Canada  
800-565-6699  
[www.schneider-electric.ca](http://www.schneider-electric.ca)