

# Your choice of platform

## Mobile



Allows you to monitor & control Pro-face HMI screen on a smart phone or a tablet seeing machine information wherever you go.

## Pro-face Remote HMI



## IPC Industrial Windows Personal Computer

Offer a wide selection with technology to meet your exact needs, Available in Box & Panel types with sustainability, durability and expandability.

## HMI Human Machine Interfaces

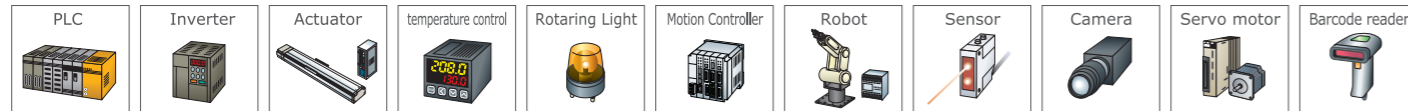
Offer extensive connectivity, clean, clear displays, and wide variety of product lines - standard, compact, modular, and handheld HMIs.

## HMI+Control

Offer lower overall system costs and less panel space. Combines built-in PLC functionality with an operator interface, which is all-in-one software.



## Direct connection via our products to various devices enabled with our all-in-one software



[www.profaceamerica.com](http://www.profaceamerica.com)

### WARNING

**HAZARD OF OPERATOR INJURY, OR UNINTENDED EQUIPMENT DAMAGE**  
 Before operating any of these products, be sure to read all related manuals thoroughly.  
 Failure to follow these instructions can result in death, serious injury, or equipment damage.

- For printing purposes, the colors in this catalog may differ from those of the actual unit.
- Actual user screens may differ from the screens shown here.
- Electrical equipment should be installed, operated, serviced, and maintained only by qualified personnel. No responsibility is assumed by Schneider Electric Japan Holdings for any consequences arising out of the use of this material.
- All product names used in this catalog are the registered trademarks or trademarks of their respective companies.
- All information contained in this catalog is subject to change without notice.

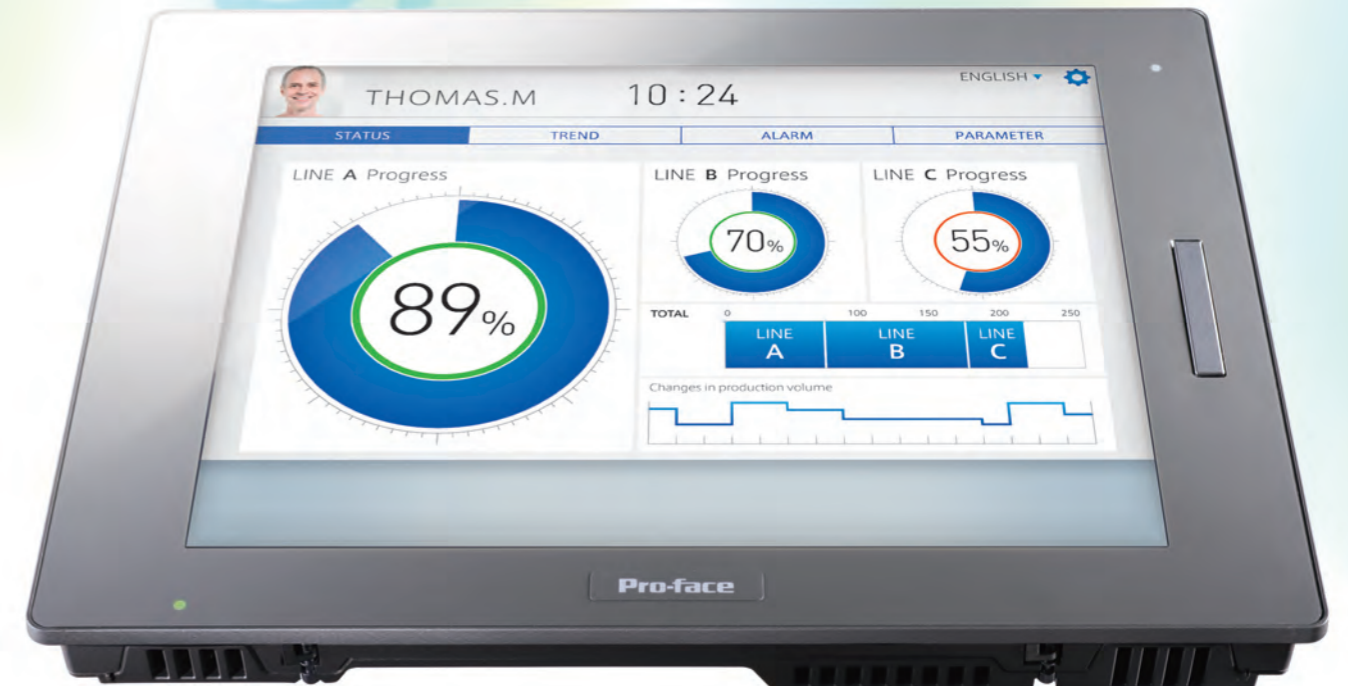
<b>Global Headquarters</b> Schneider Electric Japan Holdings Ltd. Pro-face Japan Tokyo, JAPAN <a href="http://www.proface.com/ja">www.proface.com/ja</a>	<b>Australia</b> Pro-face by Schneider Electric New South Wales, AUSTRALIA <a href="http://www.proface.com.au">www.proface.com.au</a>	<b>New Zealand</b> Pro-face by Schneider Electric Auckland, New Zealand <a href="http://www.proface.com/en">www.proface.com/en</a>	<b>China</b> Pro-face China International Trading Shanghai, P.R.CHINA <a href="http://www.proface.com.cn">www.proface.com.cn</a>	<b>India</b> Pro-face by Schneider Electric Bangalore, INDIA <a href="http://www.proface.co.in">www.proface.co.in</a>	<b>European Headquarters</b> Pro-face Europe B.V. Hoofddorp, THE NETHERLANDS <a href="http://www.proface.eu">www.proface.eu</a>	<b>Austria</b> Pro-face by Schneider Electric Ratingen, GERMANY <a href="http://www.proface.at">www.proface.at</a>	<b>Belgium</b> Pro-face by Schneider Electric Brussels, BELGIUM <a href="http://www.proface.be">www.proface.be</a>	<b>Denmark and Sweden</b> Pro-face by Schneider Electric Ballerup, DENMARK <a href="http://www.proface.dk">www.proface.dk</a>
<b>South Korea</b> Pro-face by Schneider Electric Seoul, SOUTH KOREA <a href="http://www.proface.co.kr">www.proface.co.kr</a>	<b>Singapore</b> Pro-face by Schneider Electric SINGAPORE <a href="http://www.proface.sg">www.proface.sg</a>	<b>Taiwan</b> Pro-face by Schneider Electric Taipei, TAIWAN <a href="http://www.proface.com.tw">www.proface.com.tw</a>	<b>Thailand</b> Pro-face by Schneider Electric Bangkok, THAILAND <a href="http://www.proface.com/en">www.proface.com/en</a>	<b>Vietnam</b> Pro-face by Schneider Electric HCMC, Vietnam <a href="http://www.proface.com/en">www.proface.com/en</a>	<b>France</b> Pro-face by Schneider Electric Mity-Mory, FRANCE <a href="http://www.proface.fr">www.proface.fr</a>	<b>Germany</b> Pro-face by Schneider Electric Ratingen, GERMANY <a href="http://www.proface.de">www.proface.de</a>	<b>Italy</b> Pro-face by Schneider Electric Milano, ITALY <a href="http://www.proface.it">www.proface.it</a>	<b>The Netherlands</b> Pro-face by Schneider Electric Hoofddorp, THE NETHERLANDS <a href="http://www.proface.nl">www.proface.nl</a>
<b>North/South American Headquarters</b> Pro-face America, Inc. Pro-face America Ann Arbor, MI, USA <a href="http://www.profaceamerica.com">www.profaceamerica.com</a>	<b>Brazil</b> Pro-face America Sao Paulo, BRAZIL <a href="http://www.profaceamerica.com">www.profaceamerica.com</a>	<b>Canada</b> Pro-face by Schneider Electric Ontario, CANADA <a href="http://www.profaceamerica.com">www.profaceamerica.com</a>	<b>Mexico</b> Pro-face America Nuevo Leon, MEXICO <a href="http://www.profaceamerica.com">www.profaceamerica.com</a>	<b>Poland</b> Pro-face by Schneider Electric Warszawa, POLAND <a href="http://www.proface.pl">www.proface.pl</a>	<b>Spain and Portugal</b> Pro-face by Schneider Electric Barcelona, SPAIN <a href="http://www.proface.es">www.proface.es</a>	<b>Switzerland</b> Pro-face by Schneider Electric Ratingen, GERMANY <a href="http://www.proface.ch">www.proface.ch</a>	<b>United Kingdom</b> Pro-face by Schneider Electric Coventry, UNITED KINGDOM <a href="http://www.proface.co.uk">www.proface.co.uk</a>	

# Pro-face

by Schneider Electric

Graphic Operator Interface

# SP5000 SERIES



Enhanced, Modular HMIs  
for extensive data management

# SMART PORTAL

With increasingly sophisticated machine performance; production management and predictive maintenance utilizing operation data; and the growing popularity of the cloud, big data is coming to the manufacturing shop floor.

Pro-face has realized unprecedented connectivity in the new SMART PORTAL, creating a new interface designed firmly with the future in mind. The SP5000 series allows a huge variety of data to be downloaded to SMART PORTAL and transmitted in an optimal format to those who need it.

SMART PORTAL connects information and people for optimal communication



## *Valuable information in the right format*



Having more information is not necessarily better than having less. Value is created when the right information reaches the right people in the right format.

## *Bring your factory closer to your office*



By segmenting the network, SMART PORTAL makes it possible to connect factories and offices while ensuring the highest security.

## *Simple to use —any time, any place*



Overseas production and the diversification of market needs have increased the need for efficient machine setup and maintenance.

## Check out the Movies

These movies will give you more information about SMART PORTAL concepts and benefits.



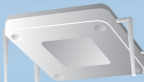
# SMART PORTAL links two previously separate worlds

## Enterprise Network

Integrate different networks while ensuring sufficient security.



Wireless Antenna



## HMI RELIABILITY

Communicate real-time with a range of control devices, and collect data at high speed.



## IPC VERSATILITY

Utilize Windows applications to deal with alarms or maintenance.



Case 1  
High performance HMI

Case 2  
Application PC

Case 3  
Maintenance PC

Case 4  
Data Collection PC

## Shop Floor Network

Connect various devices on your shop floor with programless.

Accurately convey vital information in the right way at the right time.

### Case 1 High performance HMI

**Provide real-time response**

Improves rendering performance and achieves real-time response. With high-speed processing ensuring high-speed rendering, SMART PORTAL replaces devices that have suffered from unsatisfactory response speed in the past.

### Case 2 Application PC

**Use as a built-in application PC**

SMART PORTAL can be used in environments where PCs have been built into machines to allow the use of Windows applications. Dedicated apps can be used on the SMART PORTAL.

### Case 3 Maintenance PC

**Use as a maintenance PC**

Manuals and all kinds of development tools can be saved in SMART PORTAL. There is no need to take a PC down to the factory every time maintenance work needs to be done.

### Case 4 Data Collection PC

**Use as a data collection PC**

Separate IP addresses can be allocated for SMART PORTAL's two Ethernet ports. A network with the highest security can be built between the office and the factory. In addition, collected data can be stored on NVRAM to protect from data loss.

# Display × Box module design provides flexible functionality and size

- With a selection of ten displays and three boxes available, there are thirty SMART PORTAL combinations to choose from.
- Modular design allows the display to be attached to and detached from the box, making it possible to replace only parts that need replacing

19" Wide 15" Wide 15" 12" 10"

## Premium Display

Product Name	19" Wide	SP-5800WC
	15" Wide	SP-5700WC
	15"	SP-5700TP
	12"	SP-5660TP (Wireless LAN model)
	12"	SP-5600TP
	10"	SP-5500TP

### Auto Scaling

A single screen data works on three sizes of premium displays for smooth management of mixed product lines.



### Wireless LAN

Easily establish a wireless network in tough environments with a built-in antenna and IP67F-compliant protection structure.



### Display extension Multi Display Adapter

Separate installation across long distances with a single LAN cable with Multi Display Adapter combined.



New 12" 12" Wide 10" Wide 7" Wide

## Advanced Display

Product Name	12"	SP-5600TA
	12" Wide	SP-5600WA
	10" Wide	SP-5500WA
	7" Wide	SP-5400WA



## COMBINATIONS

Enable to utilize Windows Applications together with HMI (equipped with HMI Runtime standard)

### Open Box

Product Name SP-5B41

Back Side Interfaces

- Serial x2
- Ethernet x2
- USB (Type A) x2
- USB (mini-B) x1
- USB (Type A) x1
- DVI-D x1
- AUX x1
- AUDIO Input x1

Reliable Real-time OS High performance & expandable HMI

### Power Box

Product Name SP-5B10

Back Side Interface

- USB (mini-B) x1
- AUX x1
- Expansion Unit x1

+Control +Control

- CANopen Master
- FLEX NETWORK Master
- PROFIBUS DP Slave

Reliable Real-time OS High performance HMI

### New Standard Box

Product Name SP-5B00

Back Side Interfaces

- Serial x2
- Ethernet x 2
- USB (Type A) x2
- USB (mini-B) x1

### HMI Screen Editor and Logic Programming Software

### GP-Pro EX



Intuitive operation reduces development time required for screen creation.

### Lite SCADA Software BLUE Open Studio



Development and runtime software that incorporates all the tools users need to create SCADA HMI applications, dashboards and OEE interfaces.

### Remote Monitoring Software for Mobile

### Pro-face Remote HMI



Display and operate the factory via a tablet or smartphone.

### Secure Remote Access over Internet

### Pro-face Connect



Pro-face Connect is a ready to use embedded HMI service to access machines remotely and securely.

Open Box Power Box

### Removable system

Set up screens by simply inserting a CFast (Open Box) or SD card (Power Box). No need for a separate PC.



Open Box Power Box Standard Box

### EZ Series

Extend functionality simply via a single USB cable.



Open Box Power Box Standard Box

### Multi-Converter

Collect data of various device units without a display by combining DC Power Supply Adapter.

