

Pro-face

by Schneider Electric

SP5000 Series Multi Display Adapter

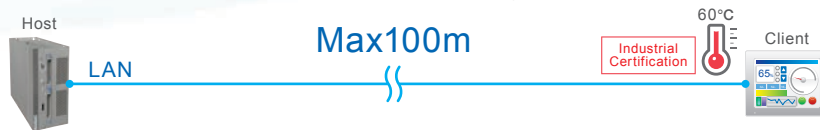
Smart visualization more efficiency at any place.



Ethernet-Connected Flat Panel Adapt for an Industrial Environment

Separate installation across long distances
with a single LAN cable

Well-adapted to production environments, reliable and easily installed.



Select display mode

Compatible with cloned or extended display mode.
Independent monitoring and operation on each panel is possible.

Clone mode

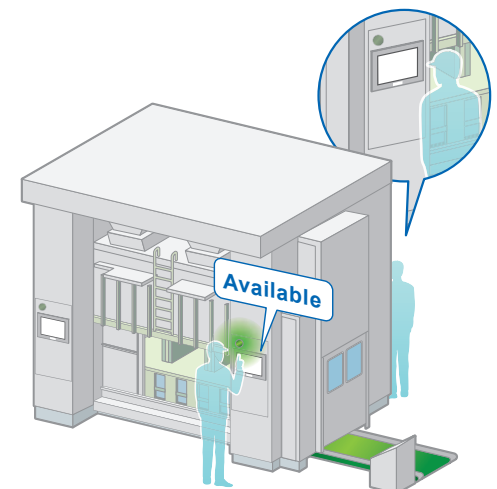


Extended mode



Exclusive control of touch input

Prevent trouble due to unintended simultaneous
operation by multiple users.



* Use of this exclusive control is limited to a specific host machine.

System Configuration

Setup & maintenance: One place & one time

* MDA: Multi Display Adapter (Model No. PFXZCDADEXR1)

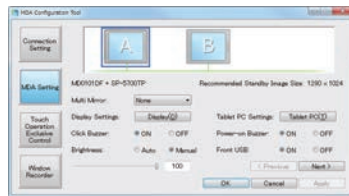
Windows Terminal



Distance: 100M between host and external monitor
Wiring: 1 LAN cable for both video & touch signal

MDA Configuration Tool Version Up

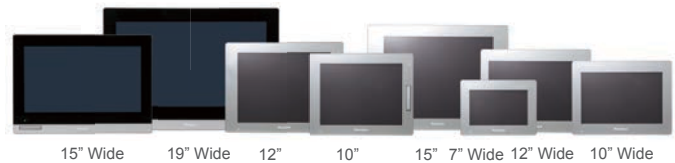
Configure settings of the host and client (MDA) with the MDA Configuration Tool.



Download from our Web site. www.proface.com

SP5000 Series Display Lineup

A wide lineup range from 19" Wide to 7" Wide.



Related Product

Flat Panel Monitors FP5000 Series

FP5000 series products using DVI cables are suitable for installation for shorter distances between host and flat panel monitor.



15" (XGA)
PFXFP5700TPD



12" (XGA)
PFXFP5600TPD

⚠ WARNING

HAZARD OF OPERATOR INJURY, OR UNINTENDED EQUIPMENT DAMAGE
 Before operating any of these products, be sure to read all related manuals thoroughly.
Failure to follow these instructions can result in death, serious injury or equipment damage.

- For printing purposes, the colors in this catalog may differ from those of the actual unit.
- All product names used in this catalog are the registered trademarks or trademarks of their respective companies.
- Actual user screens may differ from the screens shown here.
- All information contained in this catalog is subject to change without notice.
- Electrical equipment should be installed, operated, serviced, and maintained only by qualified personnel. No responsibility is assumed by Digital for any consequences arising out of the use of this material.

Pro-face
by Schneider Electric

Visit our website for more information.
www.profaceamerica.com

Global Headquarters
 Digital Electronics Corporation
 [JAPAN] Tel: +81-(0)6-6208-3133

North/South American Headquarters
 Pro-face America, Inc.
 [U.S.A.] Tel: +1-734-477-0600

European Headquarters
 Pro-face Europe B.V.
 [THE NETHERLANDS] Tel: +31 (0)23 55 44 099