



ET6000 Series Better Visualization and More Information

ET6000 Series has cost-effective and just enough functionality. And easy migration with software and hardware compatibility. Enhance your machine with features and good performance from HMI Centric concept.



Entry HMI ET6000 Series

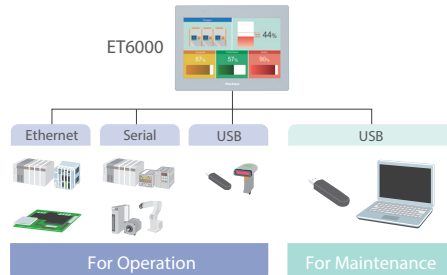
profaceamerica.com

Pro-faceTM
by Schneider Electric

New Pro-face Entry HMI ET6000 Series, leveraging HMI Centric Concept

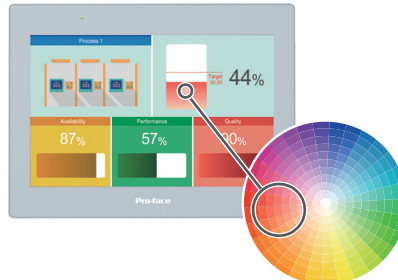
Connect with various devices

Rich interface and various protocols support Pro-face connectivity.



High resolution & More colors

High resolution & More colors



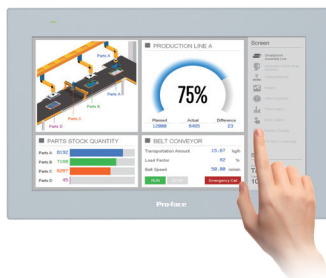
Best in class Visualization

Right enough memory size for more images to create nice looking screens.



Smooth Operation

Wide Screens make it easier machine operation because of all information at a glance.



Enhanced cyber security

Security checking at CPU level against basic intentional attacks.



Sustain in various industrial environment

Partially coated against high humidity and dust as a standard.



Model No	PFXET6400WAD	PFXET6500WAD
Display	7.0" Wide (800 x 480)	10.1" Wide (1,024 x 600)
Touch Panel	16 million colors White LED 16 level brightness control	
Interface	Type : resistive film (analog) / Single touch / Service life : 1,000,000 times or more	
Memory	COM1 : RS-232C, COM2 : RS-422 / 485, Ethernet : IEEE802.3i / IEEE802.3u, 10BASE-T / 100BASE-TX x 1, USB : Type A x 1, micro-B x 1	
Certifications	Application memory : 32MB Backup memory : 128KB	
Ambient air temperature	IP65, CE, UL, KC	
Dust	0...50 °C (32...122 °F)	
Pollution degree	0.1 mg/m ³ (10 ⁻⁷ oz/ft ³) or less (non-conductive levels)	
Atmospheric pressure (operating altitude)	For use in Pollution Degree 2 environment	
Vibration resistance	800 to 1,114 hPa (2,000 m [6,561 ft.])	
Cooling method	IEC/EN 61131-2 compliant / 5...9 Hz Single amplitude 3.5 mm (0.14 in) / 9...150 Hz Fixed acceleration : 9.8 m/s ² / X, Y, Z directions for 10 cycles (approximately 100 minutes)	
External dimensions (W x H x D)	Natural air circulation	
Panel cut dimension (W x H)	205.5 x 150.5 x 45 mm (8.09 x 5.92 x 1.77 in)	270.5 x 200.5 x 47 mm (10.65 x 7.89 x 1.85 in)
Weight	190 x 135 mm (7.48 x 5.31 in)	255 x 185 mm (10.04 x 7.28 in)
	0.61 kg (1.34 lb) or less	0.99 kg (2.18 lb) or less

profaceamerica.com

Visit ET6000 web site for more information!
<https://www.profaceamerica.com>

Contact Us (Worldwide Pro-face)
<https://profaceamerica.com/en-US/content/contact-pro-face-america>

©2022 Schneider Electric Japan Holdings Ltd. All Rights Reserved.

